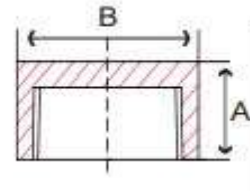




NPT Threaded Caps
Forged Carbon Steel, Class 3000
 Inches / Pounds



Part #	NPT Size	Height (A)	Outside Diameter (B)	Approximate Weight (in Lbs)
K3C.125	1/8	0.75	0.62	0.1
K3C.25	1/4	1.00	0.75	0.1
K3C.375	3/8	1.00	0.88	0.1
K3C.5	1/2	1.25	1.12	0.2
K3C.75	3/4	1.44	1.33	0.3
K3C1	1	1.62	1.75	0.8
K3C1.25	1 1/4	1.75	2.25	1.3
K3C1.5	1 1/2	1.75	2.50	1.5
K3C2	2	1.88	3.00	2.4
K3C2.5	2 1/2	2.38	3.62	4.8
K3C3	3	2.56	4.25	7.7
K3C4	4	2.69	5.50	10.6

****Forged carbon steel material conforms to ASTM SA105N, NORMALIZED***

**** Dimensions conform to ASME B16.11***

****NPT Threads on all fittings conform to ASME B1.20.1***